

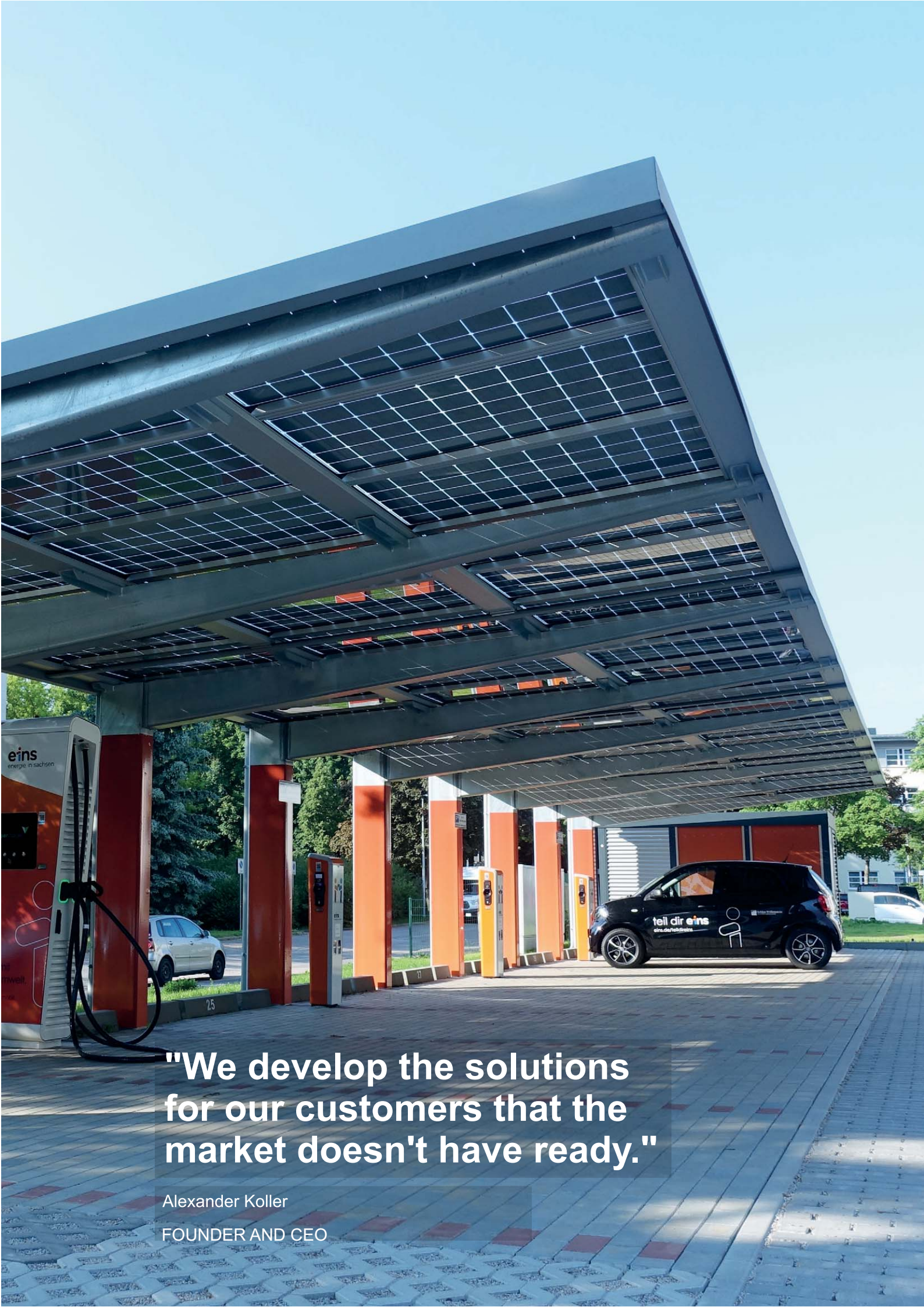


CLICKCON

PHOTOVOLTAIC ROOFSYSTEMS

**WE BRING THE SUN
INTO YOUR ROOF**

CARPORT | BIPV | PV MOUNTING SYSTEMS



"We develop the solutions
for our customers that the
market doesn't have ready."

Alexander Koller
FOUNDER AND CEO

COMPANY PROFILE

For over 15 years on the sunny side of life

Two solar pioneers set the foundation for an innovative solar company a little more than 15 years ago. The highly demanded PV mounting systems have always hit the nerve of the market.

After years of working together as solar project developers and with the experience of many independently developed and realized PV projects, the founders of ClickCon wanted a PV mounting system that was easy and safe to use. When they could not find anything suitable on the market, they decided to develop their own mounting system in 2009. This first system has evolved into the in-roof mounting system ClickPlain Pro offered today, based on the experience of more than 8,000 PV projects worldwide. This further development impresses with improved and easier handling, higher static usability and more flexible application possibilities, which makes it a highly interesting solution for the use of regenerative solar energy. But ClickCon does not stop at this new development. We are already in the process of incorporating upcoming requirements in the area of statics and also assembly into our mounting system through further innovations. The mounting system is not a once decided development, but a constantly changing product that reacts to the requirements of the market. ClickCon also focuses on the development of mounting systems for other application areas, such as Agri-PV.





REFERENCE PROJECT FREIBURG

first of its kind worldwide

By order of the city of Freiburg and the local energy supplier Badenova, the world's first fully covered PV bike path was built in Freiburg. ClickCon planned this project and supplied it with the proven ClickPlain Pro in-roof mounting system. On the 300m long PV roofing, 912 glass/glass modules with DIBT approval from Solarwatt with a total output of almost 300 kWp were installed as a rainproof roofing. The approximately 280,000 kWh of electricity p.a. is generated purchased in its entirety by the nearby Fraunhofer ISE Institute for its laboratories. Another special feature is the lighting concept also planned by ClickCon. The entire PV canopy was divided into 13 segments, each of which was equipped with a radar detector. At night, the bike path is illuminated with 10 Lux, only when a cyclist enters the respective radar area, this segment turns on its LED light and thus the way for the cyclist. The entire PV system, in addition to its protection function for cyclists, saves around 125t p.a. of CO2.

PERFORMANCE	283 kWp
AREA	1.590 m²
OUTPUT PER YEAR	280.000 kWh

OUR PROJECTS

Extract from our references

What started with an idea and the desire for a better solution quickly developed into an internationally demanded supplier of PV mounting systems. Until today we have been able to increase our project success from year to year. Here is an excerpt of the projects implemented by our customers internationally.

Project Malaysia




PERFORMANCE	1.600 kWp
AREA	8.000 m²
OUTPUT PER YEAR	2.000.000 kWh

Project Neu-Anspach, Germany



PERFORMANCE	402 kWp
AREA	2.250 m²
OUTPUT PER YEAR	380.000 kWh

Project Albstadt, Germany




PERFORMANCE	130 kWp
AREA	750 m²
OUTPUT PER YEAR	120.000 kWh

Project Skoevde, Sweden



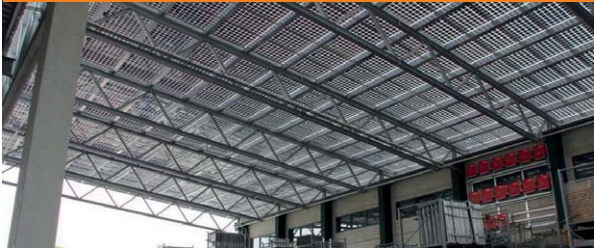
PERFORMANCE	1.400 kWp
AREA	9.800 m²
OUTPUT PER YEAR	1.470.000 kWh

Project Vilsbiburg, Germany




PERFORMANCE	1.280 kWp
AREA	7.200 m²
OUTPUT PER YEAR	1.260.000 kWh

Project Buchloe, Germany




PERFORMANCE	175 kWp
AREA	1.150 m²
OUTPUT PER YEAR	175.000 kWh

Project Amriswil, Suisse



PERFORMANCE	170 kWp
AREA	1.300 m²
OUTPUT PER YEAR	176.000 kWh

Project Rheinfelden, Germany



PERFORMANCE	160 kWp
AREA	800 m²
OUTPUT PER YEAR	170.000 kWh



YOUR ADDED VALUE

We offer solutions, not only products

ClickCon is a manufacturer of PV mounting systems and has been active for over 10 years in the field of solar projects worldwide. With the own developed and patented in-roof mounting system "ClickPlain Pro" PV-roofs can be realized in all sizes and variants. Due to the flexible and innovative in-roof system, in principle, any framed standard module can be used as a rainproof and transparent PV roof without the need for rubber gaskets.

ClickCon offers modular standard solutions on the one hand and special solutions developed on customer request. Due to this flexibility, the "ClickPlain Pro" mounting system can be used in almost all areas of solar construction, e.g. carports or terrace roofs for the private sector, for the roofing of public charging stations to the overall roofing of parking garage roofs, parking lots of shopping centers and employee parking lots of companies.

The system benefits at a glance

- modular, arbitrarily expandable PV aluminum support gutter system- for all common framed standard modules
- High long-term stability of the system due to the absence of UV and weather-susceptible components such as rubber or adhesive seals
- Formation of a rainproof cladding/roof in combination with PV modules
- no further roof cladding or -level under the PV modules required
- PV modules with general building authority approval (AbZ) possible
- quick and easy installation due to click and plug connections
- single assembly and disassembly of the PV modules from above and below
- stress-free mounting of the modules in the system
- compensation of thermally induced linear expansions in the system through the substructure
- individual rear ventilation of the modules (improved efficiency)

CLICKCON PORTFOLIO

Our product variety for you at a glance

From the very beginning, we at ClickCon have been driven by the goal of providing simple and efficient PV mounting system solutions to the market. To ensure that these can also be optimally used in your PV project, we have, in addition to the sale of our mounting systems, already at an early stage focused on the planning and design-technical implementation of your wishes in-house. You too can be inspired by the various application possibilities of our mounting system.

ClickPlain Pro In-roof Mountingsystem

Terrace roofs	Roofing of Parking garages	Riding halls
Industrial or agricultural halls, barns	Sports facilities / stadium construction	
Total roofing of parking lots	Carports/ Bikeports	
Bicycle paths and highways	Roofing of bus and train platforms	



WE ARE HERE FOR YOU

Your project partner

The personal consultation and close relationship with our customers is one of our success factors. We are happy to provide you with our knowledge and accompany you in your project.

Just contact us and we will find a way to make your wishes come true.

CLICKCON GMBH

Walter-Benjamin-Str. 10
D-79111 Freiburg

+49 761-705 999-31

info@clickcon.eu

www.clickcon.eu

CLICKCON
PHOTOVOLTAIC MOUNTING SYSTEMS